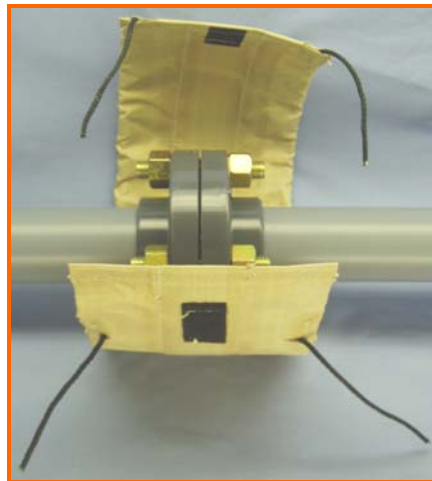


# **STEP-KO PRODUCTS**

Oil & Gas • Pipeline • Water/Wastewater • Industrial

## **SAFETY SPRAY SHIELDS**



**FOR CONTAINING AND DETECTING  
HAZARDOUS LEAKS AND SPRAYS**

**PROTECTS PERSONNEL, EQUIPMENT, AND  
THE ENVIRONMENT**

**Designed to fit:**

**Flanges  
Valves  
Expansion Joints  
Fittings  
Flexible Hoses  
Pipe  
Sight Glasses  
Manholes  
Instruments  
Pumps  
Customs**

## INTRODUCTION

- Safety Spray Shields are designed to prevent a catastrophe by temporarily containing hazardous leaks and sprays. Leaks can occur on piping systems conveying chemicals, high temperature fluids, and steam, which can harm workers, nearby equipment, and the environment. Leaks of flammables, such as fuel or oil, can create fire and explosion hazards.
- Constructed of durable fabrics that are chemical, UV, and weather resistant, our Shields are available in Teflon®, Polypropylene, PVC, and Polyethylene. Solid styles contain a pH indicating patch which signals a leak by immediately changing color towards red if acidic or towards green in an alkali. The patch is replaceable which allows reuse of the shield.
- Our Shields are ready to install quickly and simply by one person with the equipped hook and look fasteners and drawcord.
- We offer Shields for all ANSI, DIN, PN, BS, JIS, and KS standards.
- We lead the industry in providing problem solving solutions by designing and manufacturing customs for special sizes and applications.

## EXPANSION JOINT SHIELDS

- Available in same fabrics and styles as Flange Shields.
- Clear Teflon is recommended for viewing of bellows.
- Allows for lateral movement, while maintaining fit and protection.
- Available for all styles and types of expansion joints, regardless of manufacturer.
- Recommended by most manufacturers of expansion joints.



## VALVE SHIELDS



- Available in same fabrics and styles as Flange Shields.
- Manufactured to fit all styles and types of
  - Ball
  - Check
  - Butterfly
  - Gate
  - Plug
  - Diaphragm
  - Control
  - Globe

## FLANGE SHIELDS

### Clear Teflon®



- Clear Teflon® center strip allows for complete visual inspection.
- Sides constructed of premium Teflon® coated glass cloth.
- Teflon® coated thread and draw cord.
- Fire and tear resistant.
- Optional Teflon® drain nipple.
- Maximum operating temperature 400°F.

### Premium Teflon®

- Maximum Teflon® content fabric for extreme service and long life.
- 3-ply multi-layered construction.
- Teflon® coated thread and draw cord.
- Fire and tear resistant.
- Maximum operating temperature of 450°F.



### Standard Teflon®



- **Most popular style.**
- Teflon® coated glass cloth.
- Reinforced, 3-ply construction.
- Insert in center provides 4th protective layer.
- Teflon® coated thread and draw cord.
- Fire resistant.
- Maximum operating temperature of 450°F.

### Polypropylene

- Solid woven polypropylene fabric.
- 3-ply multi-layered construction.
- Insert in center provides 4th protective layer.
- Polypropylene thread and drawstring.
- Maximum operating temperature of 200°F.



### Vinyl

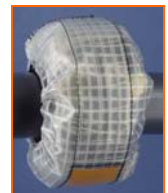


- Reinforced polyvinyl chloride fabric.
- 3-ply multi-layered construction.
- Tough poly thread and draw cord.
- Standard color is safety orange. Yellow and other colors available upon request.
- Maximum operating temperature of 170°F.



### Polyethylene

- Transparent, reinforced polyethylene fabric.
- 3-ply multi-layered construction.
- Tough poly thread and draw cord.



## RELIEF COVERS

- Designed to cover the ends of pipe vent outlets on safety relief valves and rupture discs.
- Made from durable, weatherproof vinyl and Teflon® fabrics.
- Keeps out rainwater, snow, birds, and insects.
- Contains a draw cord for securing and rope to prevent loss.
- Available for angled and straight cut pipe ends.
- Available for all pipe diameters.
- Small sizes are 6" long, larger sizes are 12" long.

## HOSE SHIELDS

- Designed to fit rubber and stainless braided flexible hoses.
- Manufactured from Premium Teflon® and reinforced vinyl.
- Available in tubular style and wraparound style.
- Available for flanged and stub-ends.
- Custom fit, regardless of length and size.

## SPECIALTY SHIELDS & COVERS

- Pipe
- Sight Glasses
- Flow Indicators
- Fittings
- Instruments
- Manholes
- Man ways
- Pumps
- Controls
- Fire Extinguishers
- Couplings
- Customs

## HOW TO ORDER

- **Flanges:** specify size and rating.
- **Valves:** specify size, rating, type, model/manufacturer, and connection-flanged, socket weld, or threaded.
- **Expansions joints:** specify size, model/manufacturer, number of convolutions, or overall length.
- **All others:** fax dimensions, or contact factory.

## RESISTANT CHART for COMMON CHEMICALS

Chemical	Maximum Temperature °F				
	PE	V	PPL	CLEAR	PTFE
Ammonia	170	170	200	200	450
Ethylene Dichloride	n/r	n/r	75	75	450
Hydrochloric Acid (to 35% conc.)	75	75	200	400	450
Hydrofluoric Acid (to 85% conc.)	75	75	200	n/r	n/r
Nitric Acid (to 30% conc.)	150	150	150	300	450
Oleum	n/r	n/r	n/r	75	450
Sodium Hydroxide (to 50% conc.)	170	170	200	300	450
Sulfuric Acid (to 30% conc.)	170	170	200	300	450

### Other Products:

Flange Isolation Gasket Kits  
 Flange Protectors  
 Heat Shrink Sleeves  
 Pipe Wrap  
 Sealing Solutions

**STEP-KO PRODUCTS-LLC**  
 PO BOX 81396  
 LAFAYETTE, LA 70598 USA  
 Phone 337-837-4141  
 Fax 337-837-4095  
[www.stepko.com](http://www.stepko.com)